



Basic Factual Information

Sinking of the FV Mary B II and 3 Persons Aboard



Commercial Fishing Vessel Mary B II

USCG Public Hearing

13 – 17 May 2019



Basic Factual Information

Sinking of the FV Mary B II and 3 Persons Aboard



*FV Mary B II before changing ownership formerly the
FV Bess Chet*



Basic Factual Information

Sinking of the FV Mary B II and 3 Persons Aboard



Vessel Particulars

<i>Name:</i>	<i>Mary B II formerly Bess Chet</i>
<i>Official Number:</i>	<i>274604</i>
<i>Flag:</i>	<i>United States</i>
<i>Type:</i>	<i>Commercial Fishing Vessel, Displacement Hull, Near Coast Fishery</i>
<i>Built:</i>	<i>1957</i>
<i>Gross Tons:</i>	<i>23</i>
<i>Net Tons:</i>	<i>15</i>
<i>Length Over All:</i>	<i>41 Feet 07 Inches</i>
<i>Beam:</i>	<i>13.4 Feet</i>
<i>Depth:</i>	<i>7.1 Feet</i>
<i>Hull Construction:</i>	<i>Wood Plank, Fiberglass Over Wood Topsides</i>
<i>Propeller:</i>	<i>5 Blade, 32 Inch</i>
<i>Propulsion:</i>	<i>Diesel Engine, Detroit Diesel, 4-71, 1974, Approx. 160 HP</i>
<i>Fuel Tanks:</i>	<i>2 – 200 Gallons Each</i>



Basic Factual Information

Sinking of the FV Mary B II and 3 Persons Aboard



Crew Particulars

Captain

Crew (2)



Basic Factual Information
Sinking of the FV Mary B II and 3 Persons Aboard



Crew Toxicology Post Mortem Results

Captain Stephen Biernacki

Alcohol - Ethanol 0:033 g/dL (+/- 0.002 g/dL) , Acetone – Not Detected

Amphetamine 0.17 mg/L (\pm 0.02 mg/L)

Methamphetamine 0.50 mg/L (+/- 0.05 mg/L)

Crew James Lacey

*Alcohol — Ethanol - Not Detected, Acetone – Not Detected
Cannabinoids*

Crew Joshua Porter

*Alcohol - Ethanol - Not Detected, Acetone – Not Detected
Toxicological examination fails to confirm the presence of controlled substances or
common pharmaceuticals.*



Basic Factual Information
Sinking of the FV Mary B II and 3 Persons Aboard



***Weather and Bar Condition Reports
at 8:58 PM PST , 08 January 2019, Yaquina Bay Bar***

JETTY TIPS AND MAIN CHANNEL:

**12-14 FOOT SWELLS WITH OCCASIONAL 16 FOOT BREAKS,
VISIBILITY: 6 NAUTICAL MILES
WINDS: EAST SOUTHEAST AT 10-13 KNOTS**

**THE BAR IS CURRENTLY RESTRICTED TO ALL RECREATIONAL
AND UNINSPECTED COMMERCIAL PASSENGER VESSELS AT
BUOY NUMBER 7.**

***USCG weather and bar restrictions for the time period
preceding the accident.***



Basic Factual Information

Sinking of the FV Mary B II and 3 Persons Aboard



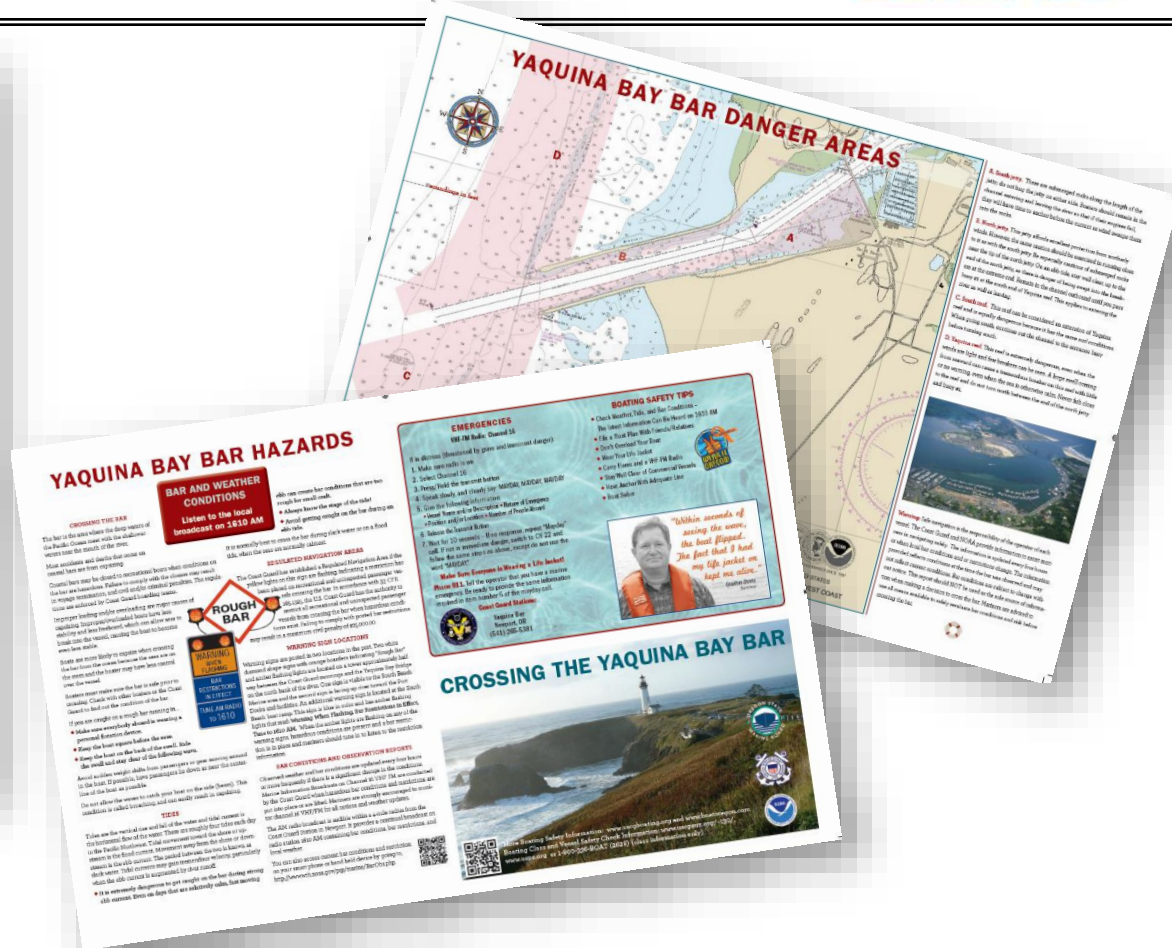
Other vessels that entered the bar at Yaquina Bar late afternoon and evening prior to the MARY B II entering – 08 Jan 2019





Basic Factual Information

Sinking of the FV Mary B II and 3 Persons Aboard



*Products to warn mariners of dangerous
waterway at Yaquina Bay*



Basic Factual Information
Sinking of the FV Mary B II and 3 Persons Aboard



Coast Guard vessels and helicopter involved in the operations, 08 Jan 2019

*CG
HH-65
Dolphin
Helicopter*



*Victory
52 Foot, Motor Life Boat*

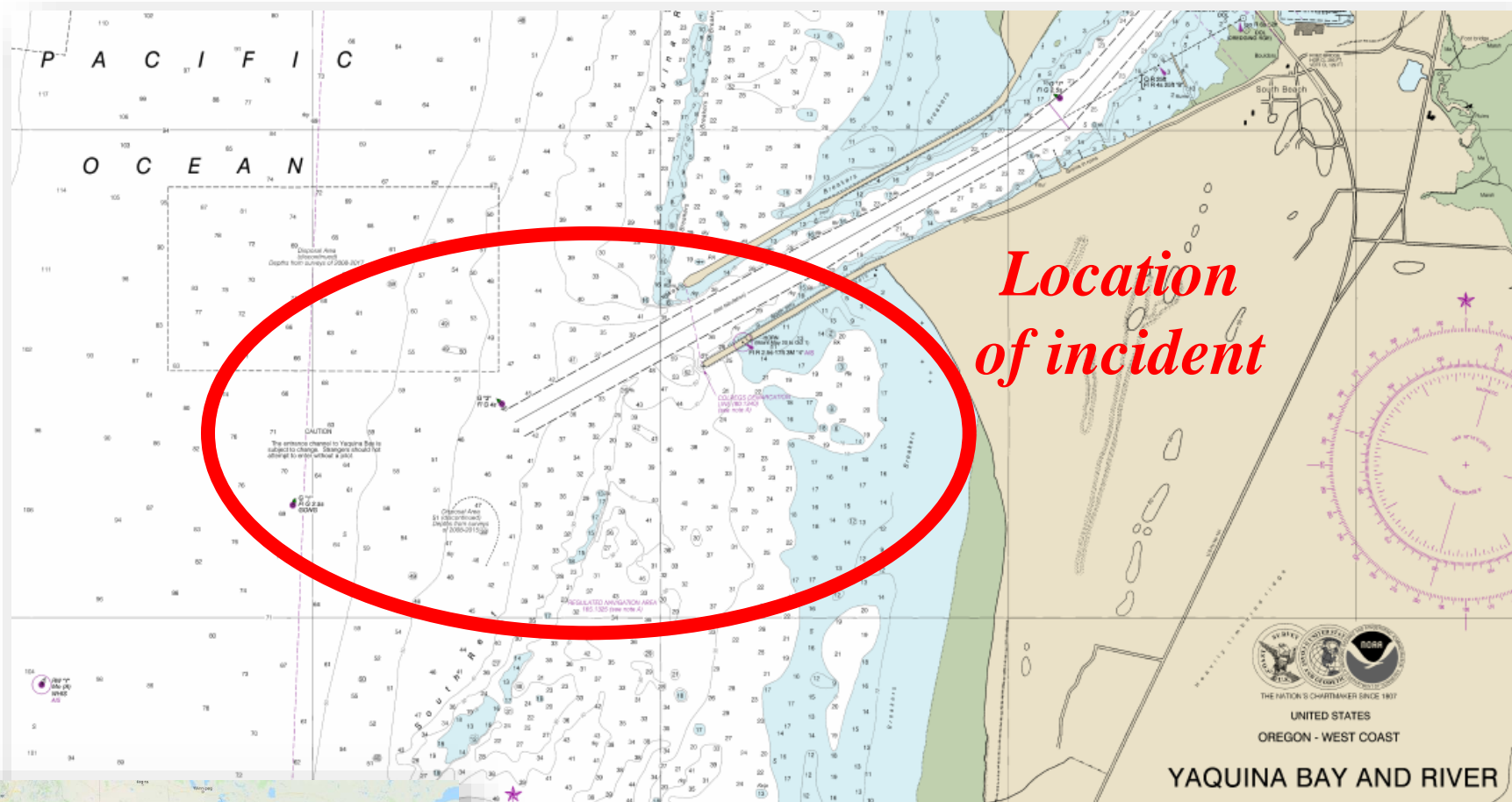


*CG 47266
47 Foot, Motor Life Boat*



Basic Factual Information

Sinking of the FV Mary B II and 3 Persons Aboard

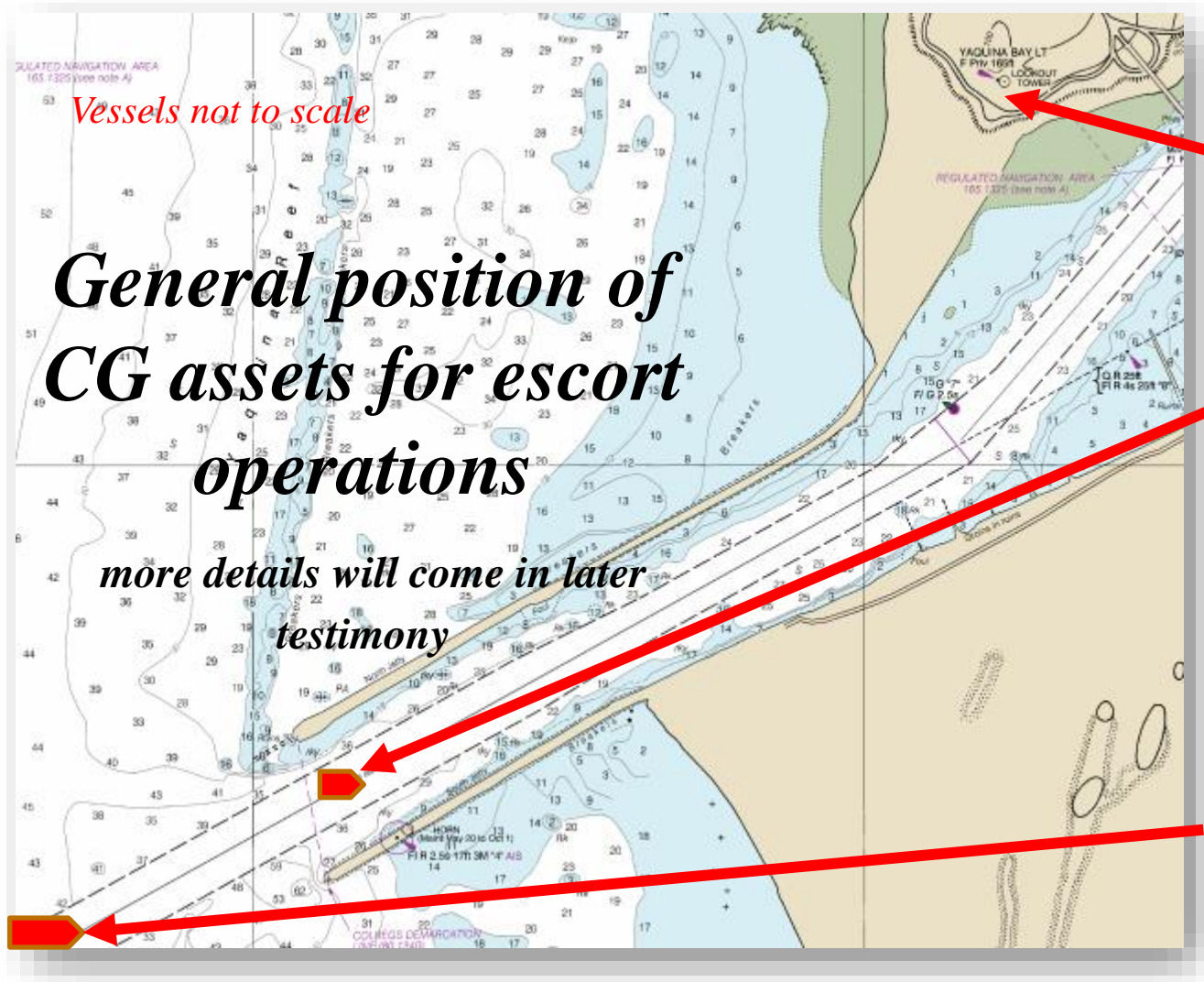


Nautical Chart of Entrance to Yaquina Bay



Basic Factual Information

Sinking of the FV Mary B II and 3 Persons Aboard



CG Mobile 1. The position visually observed the bar and makes reports to CG vessels.

Coast Guard 47 foot Motor Lifeboat

*Coast Guard 52 foot Motor Lifeboat
“Victory”*



Basic Factual Information

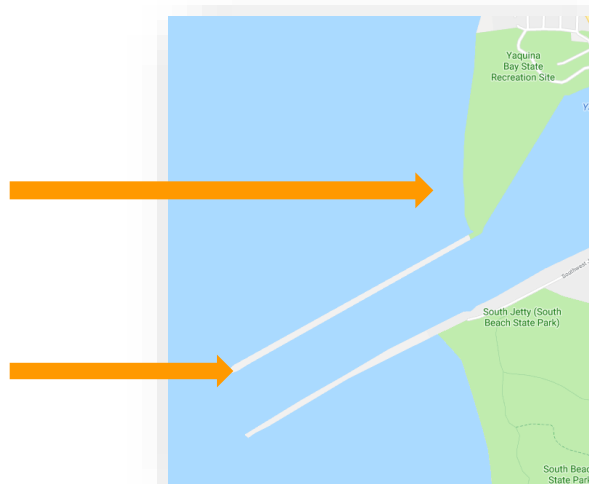
Sinking of the FV Mary B II and 3 Persons Aboard



Location of accident and final location of wreckage of FV Mary B II

Approximate
location of cabin and
deck wreckage

Approximate
location of sinking



Wreckage
FV Mary B II
Cabin and Forward
Deck



Basic Factual Information

Sinking of the FV Mary B II and 3 Persons Aboard



END